

# ADA Outdoor Access 2019

0.1 Number of CEU/LU

Presenter, Michael Love APA

TDLR Provider #1521

AIA/CES Provider #G583

ICC Preferred Provider #1321





505.10

# Best Practices



Accessibility Professionals Association (APA) is a Registered Provider with The American Institute of Architects Continuing Education Systems (AIA/CES). Credit(s) earned on completion of this program will be reported to AIA/CES for AIA members. Certificates of Completion for both AIA and non-AIA members are available on request.

This course is registered with the AIA/CES for continuing professional education. As such, it does not include content that may be deemed or construed to be an approval or endorsement by the AIA of any material of construction or any method or manner of handling, using, distributing, or dealing in any material or product. Questions related to specific materials, methods, and services will be addressed at the conclusion of this presentation.

Did you sign-in? To receive credit for this course, you must sign in and attend the entire presentation.



This presentation is protected by US and International Copyright laws. Reproduction, distribution, display and use of the presentation without written permission of the speaker is prohibited.

2019 © Access Atelier LLC





# Course Description

---

- This course is intended to provide information regarding accessible exterior routes and what to avoid in planning & constructing exterior areas.



# Learning Objectives

---

- Proper application of the ADA
- Identify components of site arrival points
- Identify accessible parking requirements and
- Exterior route components
- Door maneuvering requirements



# Proper application of the ADA

---

- Commercial facilities
- Public buildings
- Parks & outdoor developed areas
- Private residential exception
- Maintenance
- Ongoing barrier removal
- Temporary construction
- Maintaining accessible route through construction



# Title III Barrier Removal

- ❑ Facilities constructed after 1992 should already be accessible
- ❑ 'Public Accommodations' built prior to 1992 should have removed existing barriers
- ❑ Those that are readily achievable without much difficulty or expense



# Title III Barrier Removal

## ☐ Commercial Facilities

- ☐ Those that are not public accommodations only need to provide access to goods & services and
- ☐ Provide workplace accommodation as needed for employees

# Site arrival & exterior routes

---



# Where are accessible routes required?

- ❑ Between accessible building entries and site arrival points
  - ❑ Accessible parking
  - ❑ Accessible passenger loading zones
  - ❑ Public streets and sidewalks
  - ❑ Public transportation stops
- ❑ Between accessible buildings on a site



206.2.1





206.2.1





444

RESERVED  
PARKING  
VAN  
ACCESSIBLE

EVERYDAY LOW PRICE  
4x6 Rubber Mats  
\$39.98  
Pine Shavings

EVERYDAY LOW PRICE  
Wood Shavings  
\$4.28  
Pine Shavings

# Sidewalks and Exterior Routes

- ☐ Stable, firm and slip resistant
- ☐ Maximum 5% running slope / 2% cross slope
- ☐ Maximum ¼" abrupt change in level
- ☐ Maximum ½" beveled change in level
- ☐ Minimum 36" clear width
- ☐ Passing spaces every 200 feet
- ☐ Accessible pedestrian gates













GALVESTON  
HISTORICAL  
FOUNDATION  
Presents the Property  
on the  
Galveston  
Historic  
Homes  
Tour  
First Two Weekends  
in May  
www.galvestonhistory.org

# Maintenance of Accessible Features

- ❑ Title II and Title III entities must maintain accessible features in “operable working condition”







303.4







303.2





403.5.1





309.2 & 308.3









302.3









404.2

# Ramps



# Ramps

- ☐ Running slope of 5% to 8.3%
- ☐ Handrails on both sides
- ☐ Clear width of 36" between handrails
- ☐ Level landings at top, bottom & every 30" of rise or change in direction
- ☐ Edge protection









405.2 / 405.9 / 505.2 / 505.10



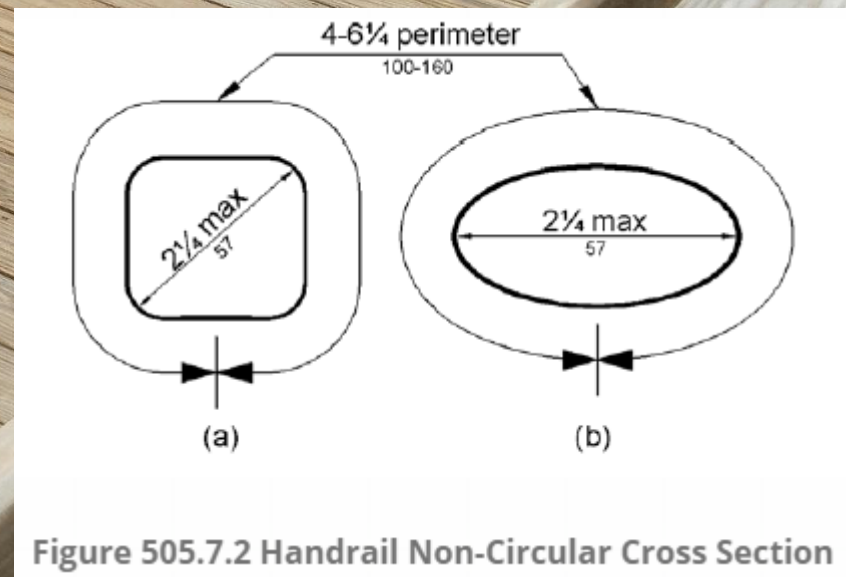


Figure 505.7.2 Handrail Non-Circular Cross Section





405.7 / 505.2 / 505.10





CARUTH HALL

HILLCREST FOUR

# Curb Ramps

*“A short ramp cutting through a curb or built up to it”*

- ☐ Running slope of 5% to 8.3%
- ☐ Handrails NOT required
- ☐ Clear width of 36”
- ☐ Landing required at top
- ☐ May not project into parking aisles or traffic lanes





405.2 / 406.4





406.4















406.6





# Parking





# Parking

- ☐ Located on the shortest possible accessible route
- ☐ Maximum slope of 2% in all directions / no changes in level allowed
- ☐ Marked access aisle
- ☐ Vertical sign mounted 60" mini. to bottom
- ☐ Vertical clearance of 98" min. at van spaces



208.3.1





502.4







LEVEL  
2



LEVEL  
2

NO PARKING TOW AWAY ZONE







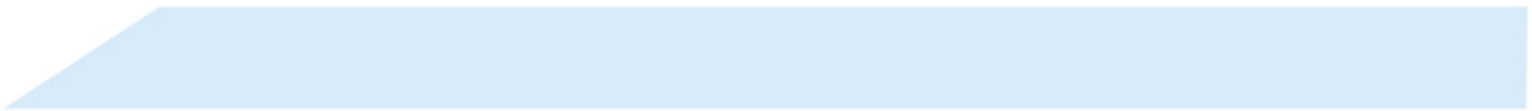








# Building Entrances





# Building Entrances

- ❑ 60% of public entrances (new construction)
- ❑ ISA required at accessible entrances where all entrances are not accessible
- ❑ Directional signs identifying route to accessible entrances where all are not accessible











216.6



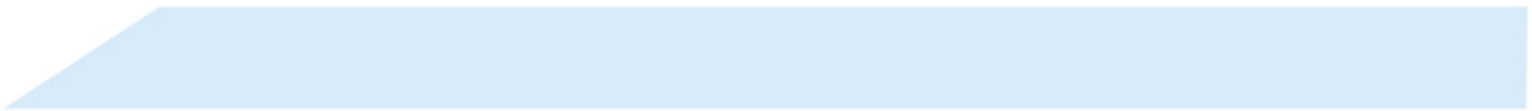


**NOT REQUIRED \***

**PUSH  
TO OPEN**

# Common areas/Path of travel

---





# Common Areas/Path of Travel

## ☐ Accessible routes

- ☐ Doors & Maneuvering Clearances
- ☐ Protruding Objects
- ☐ Signs

## ☐ Toilet & Bathing Rooms/Drinking Fountains

## ☐ Safe Harbor

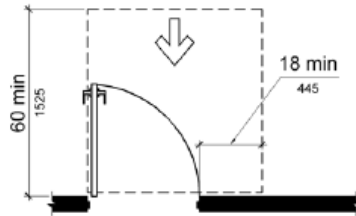
## ☐ Path of Travel

# Accessible Routes

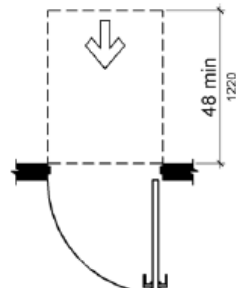
- ☐ Doors & door maneuvering clearances
- ☐ Maneuvering clearances
- ☐ Slope
- ☐ Threshold
- ☐ Door sweep & opening force



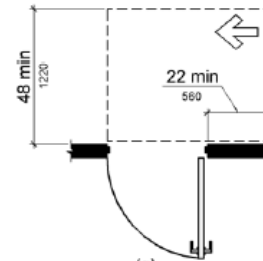
# Doors



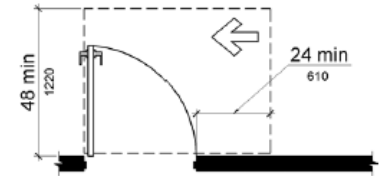
(a)  
front approach, pull side



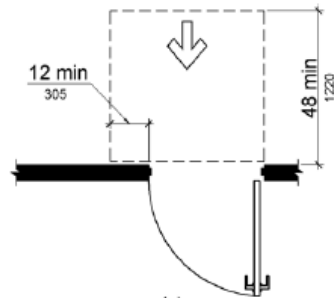
(b)  
front approach, push side



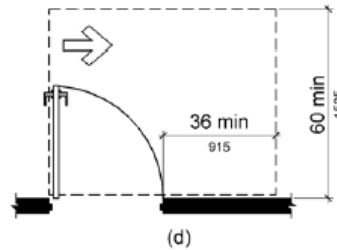
(g)  
hinge approach, push side, door  
provided with both closer and latch



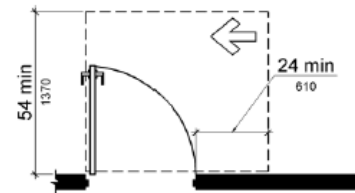
(h)  
latch approach, pull side



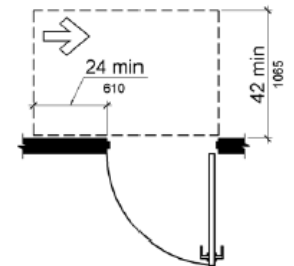
(c)  
front approach, push side, door  
provided with both closer and latch



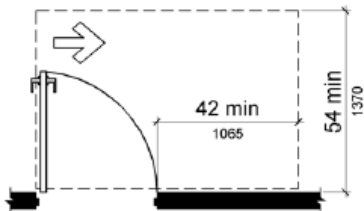
(d)  
hinge approach, pull side



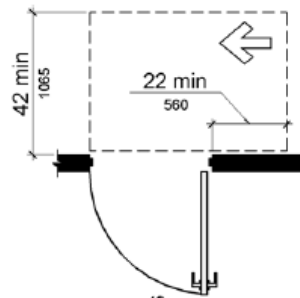
(i)  
latch approach, pull side,  
door provided with closer



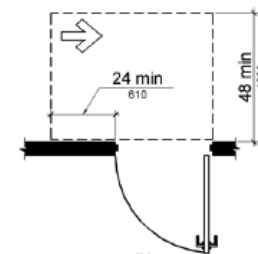
(j)  
latch approach, push side



(e)  
hinge approach, pull side



(f)  
hinge approach, push side



(k)  
latch approach, push side,  
door provided with closer





# Questions

---

This concludes the Accessibility Professionals Association  
(APA) and  
American Institute of Architects Continuing Education  
Systems Program  
ADA Outdoor Access - APA Course # 217  
Michael Love , APA

Shirley Knox, Executive Director, APA  
[scknox@sbcglobal.net](mailto:scknox@sbcglobal.net)  
512-415-5938

